

Enrollment Projections Application: Empowering Data-Driven Enrollment Strategies

Raj Bhosale
Director of Information
Systems
NC State University

Rushik Patel
Business Applications
Developer
NC State University

BACKGROUND

- Importance of Enrollment
- Enrollment Targets
 - University and College Level
- Predictive Modelling and Manual Forecasting

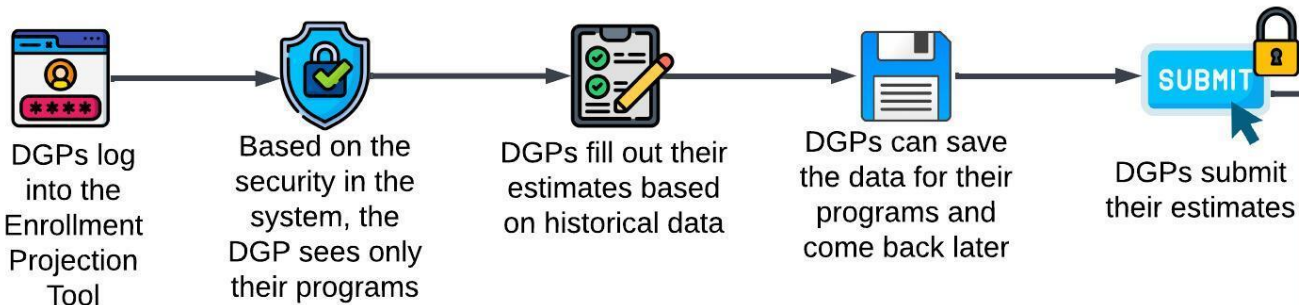
KEY ELEMENTS OF THE PROCESS

- Academic Structure
 - College→ Program→ Plan
 - College of Engineering→Mechanical Engineering→14MEMS/14MEMR/14MEPHD
- Roles, Security and Access
 - Directors of Graduate Programs
 - Asst. Deans of Colleges
- Student Groups
 - New and Continuing Students

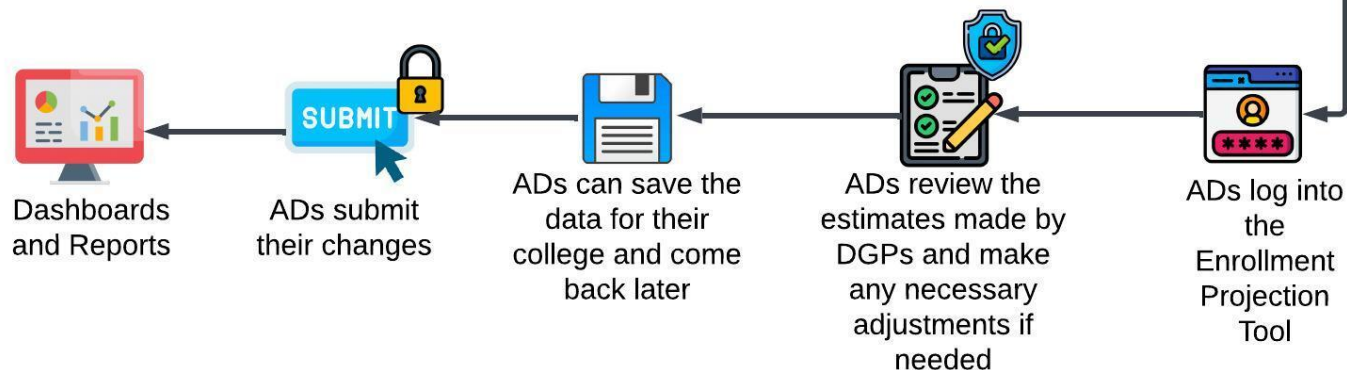
TECHNOLOGY

- Backend
 - Microsoft SQL Server
- Front End
 - PHP programming language
- Security
 - Shibboleth (Identity Management/Active Directory)

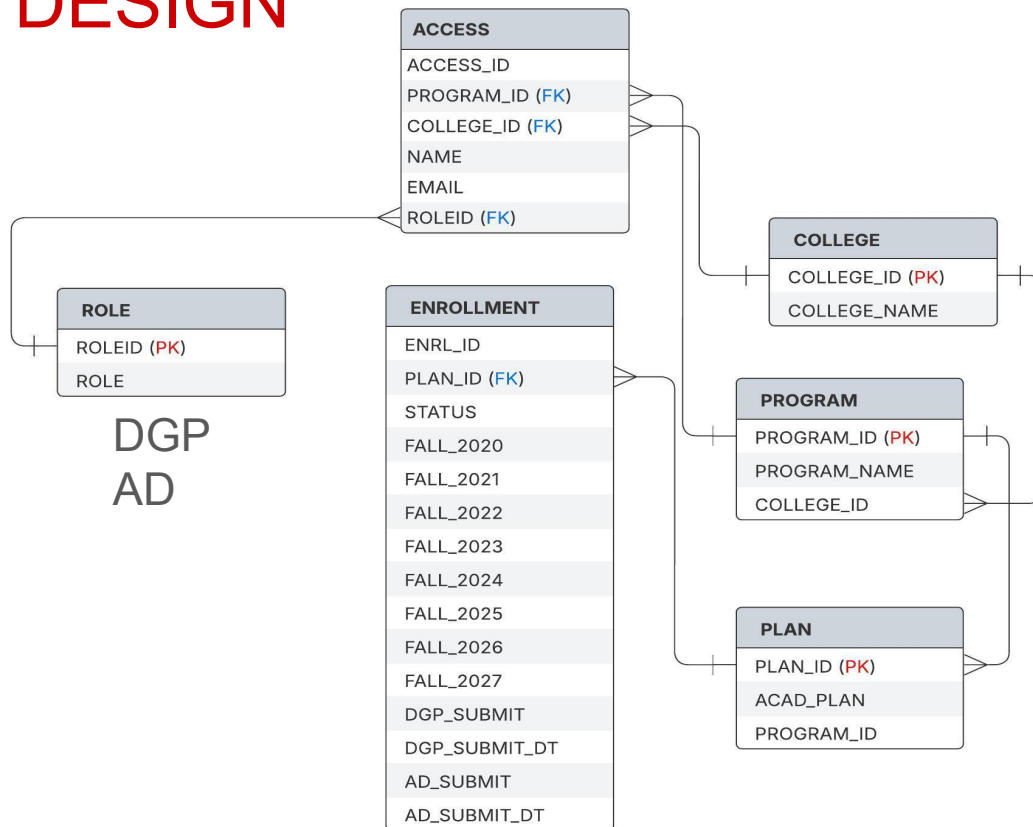
DIRECTORS OF GRADUATE PROGRAMS



ASSOCIATE DEANS OF COLLEGES



DATABASE DESIGN



TABLES

ROLE		ACCESS					
ROLE_ID	ROLE	ACCESS_ID	PROGRAM_ID	COLLEGE_ID	NAME	EMAIL	ROLE_ID
1	DGP	1	ME	COE	Raj	pnbhosal@ncsu.edu	1
2	AD	2	CE	COE	Rushik	rpatel@ncsu.edu	1
		3		COE	Peter	peter@ncsu.edu	2
		4	PHY	COS	Anna	anna@ncsu.edu	1
COLLEGE		PROGRAM			PLAN		
COLLEGE_ID	COLLEGE	PROGRAM_ID	PROGRAM	COLLEGE_ID	PLAN_ID	ACAD_PLAN	PROGRAM_ID
COE	College of Engineering	ME	Mechanical Engineering	COE	MEMS	Mechanical Engineering - MS	ME
COS	College of Sciences	CE	Civil Engineering	COE	MEMR	Mechanical Engineering - MR	ME
		PHY	Physics	COS	CEMS	Civil Engineering - MS	CE
					PHYPHD	Physics - PhD	PHY

TABLES

ENRL_ID	PLAN_ID	STATUS	FALL_20	FALL_21	FALL_22	FALL_23	FALL_24	FALL_25	FALL_26
1	14CEMS	New	7	24	12	13	9	15	NULL
2	14CEMS	Continuing	19	13	19	18	20	23	NULL
3	14MEMS	New	48	72	48	58	47	55	NULL
4	14MEMS	Continuing	143	112	103	102	90	117	NULL
5	17PYPHD	New	13	11	15	17	21	25	NULL
6	17PYPHD	Continuing	107	108	95	85	81	95	NULL

APPLICATION INTERFACE

Enrollment Projection

- This application is intended to assist DGP's and their respective Associate Deans for Academics (ADA) in developing enrollment targets for their programs for Fall 2026.
- The tool provides the previous five years of enrollment data by program and the percentage change in enrollment as compared to last year. You can download the information for further collaboration and review.
- The enrollment targets for all programs in a College will be routed to the Associate Dean for Graduate program for final review and approval.
- The Graduate School will incorporate the final targets on the daily/weekly admissions reports that will be initiated during the enrollment cycle for the Fall 2026 cohort to compare against the actual enrollments.
- The "Dashboard" button on the top right corner provides a dynamic chart of Admissions and Enrollment for the most recent 5 years. Information on this dashboard can be drilled down further by Program, Degree Type, and Academic Plan to assist the AD/DGP in the target setting process.

Please Select College ▼

Please Select Program ▼

 Dashboard

Show 10 ▼ entries

Search:

Export ▼

Plan

Acad Plan

Status

Fall 2020

Fall 2021

Fall 2022

Fall 2023

Fall 2024

Percentage
Difference
(From Last
Year)

Fall 2025

APPLICATION INTERFACE

Export

Show 10 entries

Search:

Plan	Acad Plan	Status	Fall 2020	Fall 2021	Fall 2022	Fall 2023	Fall 2024	Percentage Difference (From Last Year)	Fall 2025
-MS		New	21	28	20	25	40	60 %	40
-MS		Continuing	27	42	50	45	46	2.2 %	78
-PHD		New	9	5	11	6	19	216.7 %	15
-PHD		Continuing	25	28	29	34	41	20.6 %	37
-MS		New	48	72	48	58	47	-19 %	55
-MS		Continuing	143	112	103	102	90	-11.8 %	117
-PHD		New	20	23	38	19	23	21.1 %	25
-PHD		Continuing	94	95	95	103	102	-1 %	94

Showing 1 to 8 of 8 entries

APPLICATION INTERFACE

College

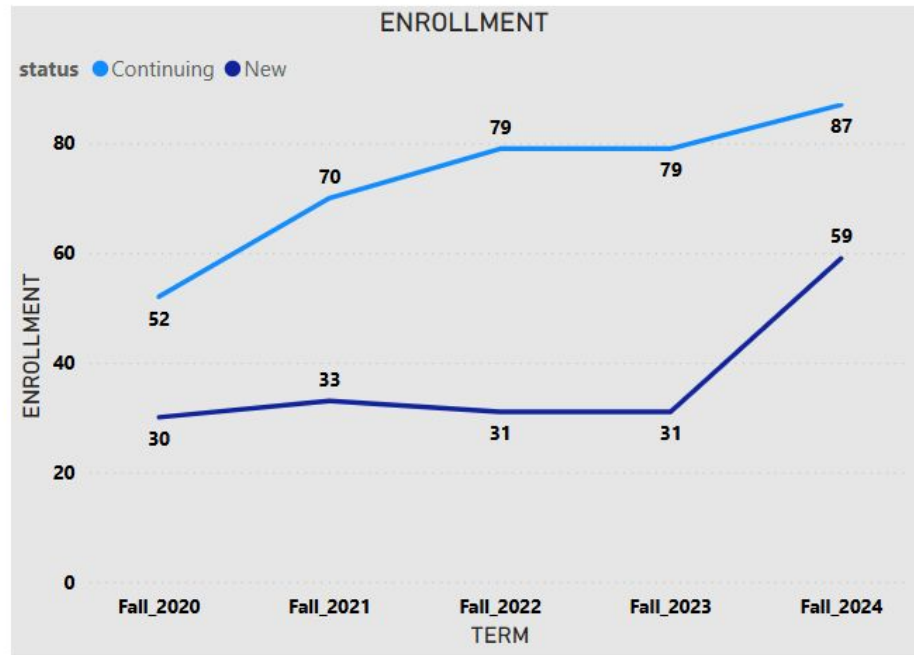
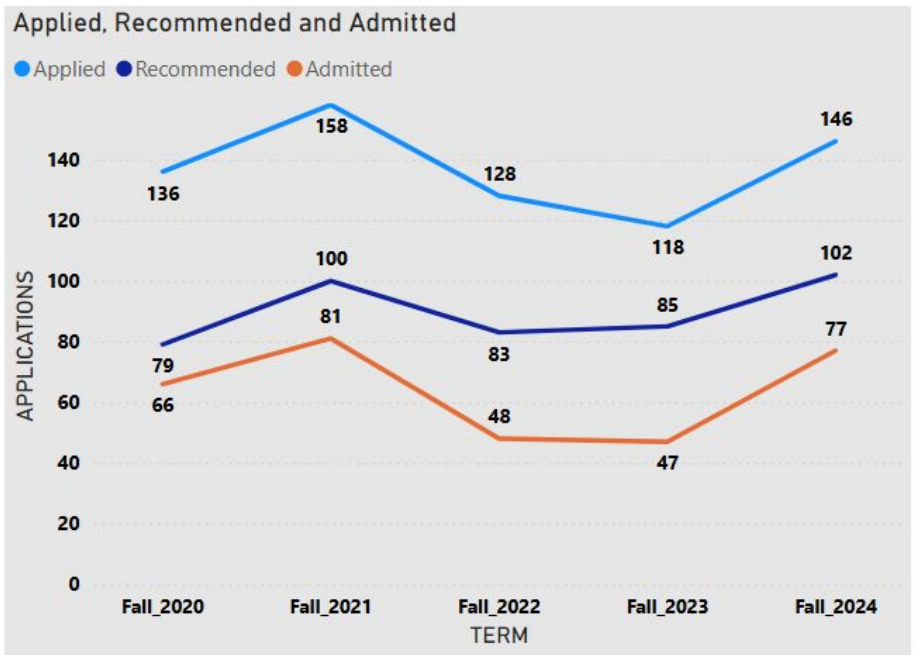
Program

Degree_Type

All

Plan

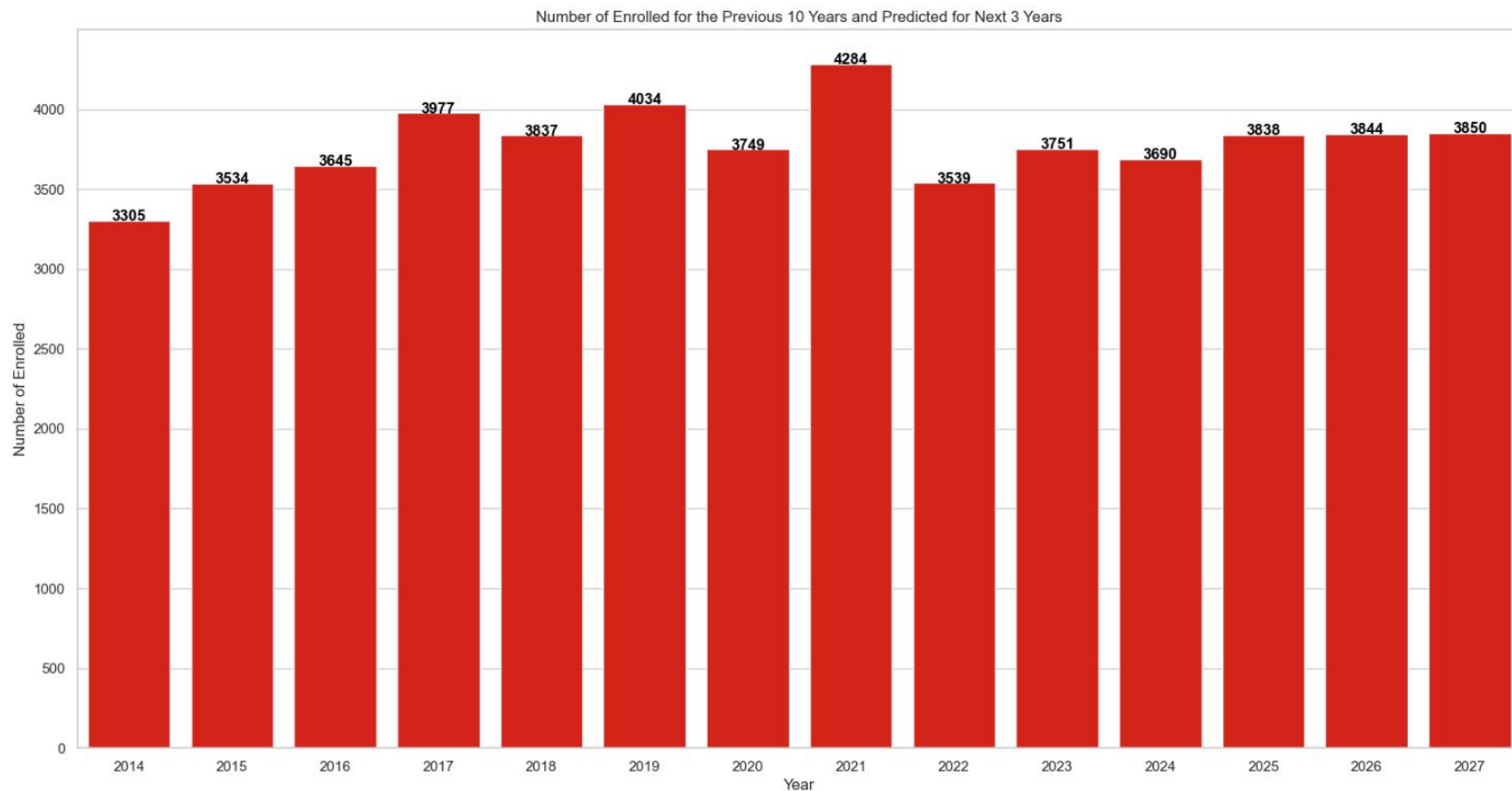
All



PREDICTIVE MODEL

- Python Jupyter Notebook
- Linear Regression Model
- Train-Test Split Approach
 - 80% Train and 20% Split

PREDICTIVE MODEL



DAILY ADMISSIONS REPORT

	Prev App	Curr App	App Diff	Prev Adm	Curr Adm	Adm Diff	Adm Pct Diff	Fall25 Pred Enrl
	10718	11292	574	430	518	88	20.5%	3013
	607	670	63	16	25	9	56.3%	277
	954	1152	198	24	33	9	37.5%	273
	130	154	24	11	7	-4	-36.4%	112
	417	421	4	12	5	-7	-58.3%	109
	1002	1090	88	45	82	37	82.2%	315
	4894	4536	-358	109	136	27	24.8%	1274
	579	754	175	140	158	18	12.9%	287
	1777	2151	374	22	31	9	40.9%	280
	53	60	7	1	2	1	100.0%	50
	94	111	17	1	0	-1	-100.0%	24

COLLEGE ▲	YIELD
	70.8%
>	74.4%
>	58.6%
>	62.5%
>	73.7%
>	65.9%
>	78.9%
>	60.8%
>	87.9%
>	80.0%
>	76.0%
>	84.2%
>	79.6%

THANK YOU!

QUESTIONS?

RAJ BHOSALE: pnbhosal@ncsu.edu

RUSHIK PATEL: rpatel34@ncsu.edu